



Watts, Griffis and McOuat

Since 1962

CONSULTING GEOLOGISTS AND ENGINEERS



Overview

Mining and exploration companies around the world depend on Watts, Griffis and McOuat Limited (**WGM**) to provide exceptional professional services tailored to the unique requirements of their exploration programs. From Mineral Resource and Reserve Estimates to exploration project management, our clients confidently rely on our expertise and dedication to make the most of their exploration dollars.

About WGM

WGM is Canada's longest running independent firm of geological and mining consultants providing value-added professional services of the highest standards to the global mineral resource industry. From grass-roots exploration through to mine closure, our expertise in project management, mineral resource and reserve estimates, technical reports, due diligence reviews, and property valuations, has distinguished WGM as the most trusted name in exploration and mining since 1962.

Contact Us

Call us at any of our worldwide locations, or send us an email at info@wgm.ca. Also visit us online at www.wgm.ca.

Toronto (416) 364-6244

Vancouver (604) 682-1929

Beijing (86)01062241091

Exploration Services

WGM has the expertise to provide a full range of services for any type of exploration program, backed by over **48 years** of solid industry experience. Our professional services include:

- ✓ Database setup, compilation, management
- ✓ Geological interpretation, section/plan generation and plotting
- ✓ Geostatistical analyses
- ✓ Mineral Resource and Reserve Estimates and Audits
- ✓ 3D modelling and polygonal or block model estimates
- ✓ Exploration project management and staffing
- ✓ Remote Sensing and GIS

How we do it

At all stages of exploration, we emphasize the importance of geological understanding and interpretation to maximize the effectiveness of your exploration dollars. You can depend on our **worldwide operational experience** to develop the technical parameters for your exploration program.



Why choose us?

We offer some of the highest level of expertise in our field, and use the most advanced computer modelling systems on the market, including Gemcom **GEMS**® 3D geological and mine planning software, **Whittle**® open pit mine optimization software, **MapInfo**® GIS software, **AutoCAD**® and more.

Plus, we have the in-house expertise to help you develop the mining and processing concepts enabling you to convert your Mineral Resources to Reserves, and can provide the economic analyses to demonstrate that your reserves can be mined and processed at a **profit**.



Database Management

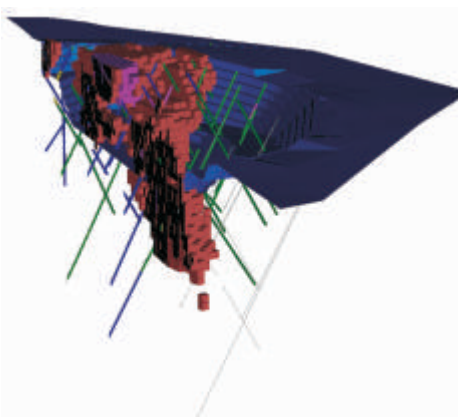
WGM has extensive experience setting up, validating and maintaining databases. Effective database design organizes information so that it may be analyzed as a whole, or divided into discrete layers or parts at will - in order to assess a larger picture or target specific items of interest.

We build databases specialized to the particular needs of project or operations in the mineral resources fields. We also verify, compile and manage large quantities of existing data into a highly useful database format. Our database management experience covers assessment records, filing records for government, regulatory filings, and validation of data as a form of due diligence.

Mineral Resource and Reserve Estimates

Many clients request technical audits to ensure that Mineral Resources and Reserves have been estimated according to standard mining industry practice or to obtain an independent assessment of

their estimates for either internal purposes or for third parties, such as financial institutions or other interested mining companies.



We can work with the client from the initial stages of an exploration program and will tailor the database and future program to meet their requirements. We also have the ability to import pre-existing databases and models in order to complete the task at hand and can return the finished product in a suitable format to the client. We use state of art software including Gemcom's GEMS® geology and mine planning software, as well as Whittle® open pit optimization software.

NI 43-101 and JORC Compliance

WGM is qualified to make disclosure for its clients which comply with National Instrument 43-101 and JORC in regard to the mineral and mining projects it works on. The Canadian Securities Administrators (CSA) and the Australasian Joint Ore Reserves Committee (JORC) have each developed rules which governs how issuers can disclose scientific and technical information about mineral projects to the public.

WGM professionals have been instrumental in the development of international mining policies (e.g. NI 43-101, CIMVal). Our professionals are frequent speakers in the professional community, and are industry experts in all areas of mining policy, laws, and business strategies.

Project Management

WGM has been retained by many firms to design and implement exploration projects in its 48 year career. Project management can and has included data compilation, target selection, surface and underground exploration, geological, geophysical and geochemical survey, drilling, preliminary feasibility studies and, of course, project monitoring..

Regional and Site Exploration Programs

WGM has carried out innumerable regional and site specific exploration programs. These programs involve detailed field investigation of mineral deposits and geological mapping to industry and government standards.

Remote Sensing and GIS Services

We have worked extensively with RadarSAT data world-wide since the satellite became operational. At WGM, we work with your geologists to interpret satellite imagery and integrate the images and interpretations into exploration databases on GIS. Your geologists can then work with the data on laptop computers in the field.

Other WGM Services

- NI 43-101 & JORC Technical Reporting
- Preliminary Economic Assessments
- Pre-Feasibility Studies
- Due Diligence
- Mineral Property Valuations
- Exploration Project Management
- Mineral Resources & Reserves
- Institutional Strengthening
- GIS Services
- Independent Qualified Person Review
- Fairness Opinion
- CSR Services
- First Nations Services
- Industry Safe Practice

Trusted Worldwide

wgm.ca